

FULL MOUTH DENTAL IMPLANTS

YOUR NEXT STEPS TO A BEAUTIFUL SECURE SMILE

We want you to sparkle, and the best way to begin is by taking care of your teeth.

www.thewobblytooth.com

HOW WILL IMPLANTS IMPROVE YOUR LIFE?

Restored Functionality: We will restore your ability to bite, chew, and speak effectively, often better than traditional dentures.

Aesthetic Improvement: We work with you to design your smile. Proper fit and defined facial structure, enhance your appearance and boost your confidence.

Convenience: You no longer have to deal with the inconvenience of removable dentures, including adhesives, cleaning solutions, and the potential for slippage or discomfort.

Improved Oral Health: Your implants are easier to clean compared to traditional dentures, reducing the risk of gum disease and other oral health issues.

Enhanced Quality of Life: With restored function and look, you will see a significant improvement in the overall quality of life. Eat a wider variety of foods, speak more clearly, and smile confidently in social situations.

Get In Touch Anytime!

call: 301-663-4012

email: hello@thewobblytooth.com

AT A GLANCE

BENEFITS

- You don't have to remove the teeth! They stay put.
- You will maintain your face shape because your bone will be supported by the implant.
- You brush your implants like you would your natural teeth!
- NO MORE CAVITIES!
- You can eat what you want!
- The implants won't move or slip so you don't have to worry about speaking, smiling and living!



YOU HAVE A WHOLE TEAM BEHIND YOU

We will be with you all along the way. If you have questions you can call. Our team wants the best outcome for you. .



BEFORE AND AFTER

SMILE TRANSFORMATIONS

“I had a great experience here, Dr. Joe took great care and detail to make sure I was good with the process and informed.”

“From the moment I walked in the door, everyone was warm, friendly, and knowledgeable. Dr. Joe and his staff made me feel very comfortable.”

“I have nothing but positivity to speak about...they have more compassion than I think I've seen anywhere...Thank you so much for showing me kindness”



Before



After



Before



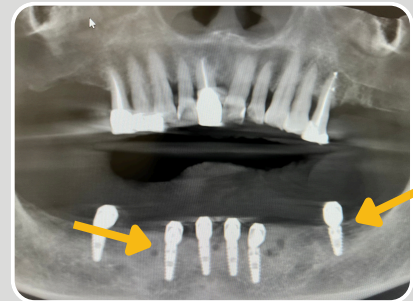
After



Before



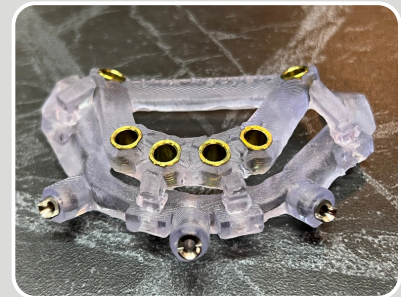
After



Surgical Placement of Implants



Lower Arch Prosthesis



Custom made surgical guide





THERE'S A DIFFERENCE

IN THE WAY YOUR SMILE IS CRAFTED



Milled Zirconia

Aesthetics:

- Zirconia can be colored and layered to mimic the natural translucency and shade of real teeth, offering excellent aesthetic results.

Strength and Durability:

- Milled zirconia teeth are extremely strong and can withstand significant biting and chewing forces, making them suitable for long-term use.
- The durability of zirconia makes these teeth less prone to chipping and cracking, providing a long-lasting solution.
- Zirconia is a type of ceramic that has exceptional strength, durability, and biocompatibility, also with highest resistance to fracture and wear.

Fit and Precision:

- The milling process allows for highly accurate and well-fitting teeth, ensuring comfort and proper function for the patient.

Manufacturing Process:

- Your teeth are created using (CAD/CAM) technology. This process cuts and shapes the zirconia into your desired shape with precise detail.



KEY DIFFERENCES

Material Strength: Milled zirconia is stronger and more durable than 3D printed nanoceramic.

Manufacturing: Zirconia dentures are milled from solid blocks, while nanoceramic dentures are built layer by layer through 3D printing.

Aesthetics: Both materials can provide a natural appearance, but zirconia may offer superior aesthetic results due to its translucency and color matching capabilities.

Customization and Speed: 3D printing allows for faster production and greater customization options, while milling is known for its precision and consistency.

Cost: Typically, milled zirconia teeth can be more expensive due to the material and manufacturing process, whereas 3D printed nanoceramic teeth might be more cost-effective.



3D Printed Nanoceramic

Aesthetics:

- Nanoceramics are a composite material of ceramic and resin, made to look very natural, with exceptional color matching and translucency. This material offers a balance between strength and flexibility.

Strength and Durability:

- Nanoceramic materials are strong, however are not as strong as zirconia. They are resistant to wear and are perfect for daily use.
- The resin component provides some flexibility, which can reduce the risk of fracture compared to more brittle materials.

Fit and Precision:

- 3D printing creates a high degree of customization with complex geometries that might be challenging with traditional milling.

Manufacturing Process:

- Your teeth are produced using 3D printing technology, which builds the prosthesis layer by layer from a digital model. This allows for rapid prototyping and customization.





SMILE NOTES

ORGANIZE YOUR THOUGHTS

Your feedback is critical. Take your time and answer the below questions to best design your smile.

LET'S CRAFT YOUR SMILE

APPEARANCE AND STYLE

How do you envision your new smile?

Do you prefer a more natural look or something that stands out?

What is your preference for the shape and size of your teeth?

Would you like your teeth to have a more rounded or square appearance?

What shade of white do you prefer for your new teeth?

Do you want your teeth to match the color of your remaining natural teeth?

How much of your gums would you like to show?

POST OP COMFORT AND FIT

Do you have any areas in your mouth that are sensitive or irritated?

Are you experiencing any problems with your bite or chewing?

Have you noticed any changes in your speech with your new prosthesis?

Are there any specific words or sounds you find difficult to pronounce?

LIFESTYLE

Do you have any hobbies or activities that might affect your choice of style or material, such as engaging in contact sports?

AT A GLANCE

BENEFITS



Oval Shape

Rectangle Shape

Square Shape

Triangle Shape



Polymers to color prosthetic gums



FINANCING

YOU HAVE OPTIONS

Each financing partner has been vetted and used by patients in our office. We only pick those which offer the greatest return on your investment.



- competitive rates, potentially lower than credit cards
- straightforward application and can be completed online
- transparency with fees and charges
- www.withcherry.com | (888) 839-7171



- has instant approval decisions
- customizable payment plans to fit your budgets
- soft credit check initially, which doesn't impact your credit score
- www.sunbit.com | (855) 678-6248



- designed for healthcare expenses
- flexible financing plans with different terms and repayment options.
- many providers accept Alphaeon Credit
- www.goalphaeon.com | (855) 497-8176



- uncollateralized loan
- competitive interest rates and flexible, long term repayment options
- www.proceedfinance.com (844) 272-7587



HOW WILL YOU DECIDE WHICH IS RIGHT FOR YOU?

LET'S MAKE NOTES ON YOUR OPTIONS

Cherry:

Sunbit:

Alphaeon:

Proceed:

Call: 301-663-4012

email: hello@thewobblytooth.com

Visit: 176 Thomas Johnson Drive
Suite 200
Frederick, MD 21702

www.thewobblytooth.com



TIME - LINE

KEEPING TRACK OF YOUR VISITS

1st Appointment - Meet the Team**

- [] Discuss your implant options & best course of treatment.
- [] Complete financing.
- [] Sign treatment plan & implant consents.
- [] Complete pre surgery photos, scans & x-rays.
- [] Work with your doctors to get medical clearance*
- [] Go through your implant packet and next steps.

**you may have an additional appointment scheduled prior to your treatment, based on your individual needs
 *once cleared, \$5000 of your payment is non-refundable []

2nd Appointment - Treatment Day

- [] Arrive at office. Bring your implant packet.
 - The implant team will take your blood pressure, after which your oral sedation will be dispensed.
 - Once seated and prepped Dr. Joe will begin your procedure.
 - Your blood will be drawn to create a healing membrane.
 - Your custom designed surgical guide is then placed on your gums for your precise implant placement.
 - Depending on your implant stability reading, you may or may not go home with a healing prosthesis.
 - The implant team will discuss aftercare with your caretaker who will then drive you home.
 - While you heal, note your likes or dislikes on the fit and look of your prosthesis. *see pg.4 to document feedback

3rd Appointment - Post-Op

- [] Arrive at office. Bring your implant packet.
 - The implant team will remove your sutures.
 - Dr. Joe will check your surgical site and chart your healing.
 - The implant team will go over your feedback on fit and look of your new prosthesis. *see pg.4 to document feedback

4th Appointment**- Smile Notes

- [] Arrive at office. Bring your implant packet.
- [] Complete final prosthesis consent and pick final colors.
 - The implant team will fit a new set of teeth.
 - Additional impressions of your mouth may be taken.
 - Continue eating foods as directed by your implant team.
 - DO NOT bite into hard things like nuts and apples.

**you may need a 5th appointment as determined by Dr. Joe

Final Appointment - Final Delivery

- [] Arrive at office. Bring your implant packet.
 - Dr. Joe will deliver your final set of teeth.
 - Make an appointment for your first cleaning.



AT A GLANCE

STAY AHEAD OF YOUR APPOINTMENTS

Appointment 1 - Date

.....

.....

Appointment 2 - Date

.....

.....

..... (up to 8hrs)

Appointment 3 - Date

.....

..... (2-3wks after surgery)

Appointment 4 - Date

.....

..... (3-4 months after surgery)

Appointment 5 - Date

.....

..... (6 months after surgery)



YOUR PROCEDURE

LET'S GET STARTED

Arrival and Prep: We will go over your surgical procedure. After taking your blood pressure and speaking with your designated caregiver, we will give you oral sedation.

Give you anesthesia: Dr. Joe will administer local anesthesia to numb your gums. If you opted for oral sedation, you will have already taken your medication and may feel drowsy at this point.

Start the surgical procedure: Once you are comfortable and numb Dr. Joe and team will begin your procedure.

Creating the PRF membrane:

To enhance your healing process, the implant team will draw your blood to be used for your PRF membrane. Dr. Joe will use specialized, minimally invasive instruments to create a visual field for your membrane and bone grafts placement. These are used to preserve as much healthy space and bone.

Install custom made surgical guide:

This custom-made instrument helps place the dental implants accurately. The guide is created by using a computer-automated 3D system. This limits implant placement error. Once installed, Dr. Joe will carefully place the dental implants into your jaw.

Close the incisions: Finally, Dr. Joe will reposition your gums and close the incision with stitches. These stitches will stay for about 3-4 weeks and will be removed at your post-op appointment.

Time to heal: Once your gums are sutured, Dr. Joe and team will give your caregiver instruction for next steps. Get rest and allow yourself time to heal.

Take your medication: Dr. Joe will prescribe medication and instruct you on the use of over-the-counter pain relief.

Definition: Platelet-rich fibrin (PRF) membrane is a three-dimensional biodegradable biopolymer, which consists of platelet derived growth factors enhancing cell adhesion and proliferation. It is widely used in soft and hard tissue regeneration.



HOW TO GET READY FOR SURGERY

Smoking & Alcohol: If you smoke, consider quitting or reducing smoking before surgery. Avoid alcohol in the days leading up to surgery. Both can lead to complications, delay in healing and increase the risk of implant failure.

Nutrition and Hydration: Eat a balanced diet & stay hydrated by drinking plenty of water in the days leading up to surgery.

Prep for Recovery: Arrange for someone to accompany you home and care for you in the next 24hrs after the procedure.

Prepare Your Home: Stock up liquid foods, such as soups, yogurt, and smoothies as directed by Dr. Joe.

Post-Surgical Care Supplies: Purchase any recommended post-surgical care supplies, such as gauze, ice packs, and pain medications, in advance.

Call: 301-663-4012

email: hello@thewobblytooth.com

Visit: 176 Thomas Johnson Drive
Suite 200
Frederick, MD 21702

www.thewobblytooth.com



POST-OP

AFTER SURGERY CARE

These post-operative care guidelines will help minimize complications and promote successful healing after your procedure. Always follow the instructions of Dr. Joe.

Oral Hygiene:

- Gently rinse your mouth with warm saltwater (1/2 tsp of salt in 8 ounces of water) after meals & before bed. DO NOT vigorously swish or spit.
- Brush your remaining natural teeth gently, twice a day using a soft-bristle toothbrush.
- DO NOT brush the surgical area or dental implants until directed by the implant team.
- DO NOT use Listerine.
- Use recommended Stella Life oral rinse.



Diet and Nutrition:

- Only have liquid & soft food for a first 4-6 months.
- Avoid hot, spicy, and crunchy foods.
- Drink plenty of water. Stay hydrated.

Avoid Smoking and Alcohol:

- Do not smoke or use tobacco products for at least one week after surgery. Avoid alcohol for at least 24 hours after surgery. Smoking and Alcohol slows the healing process.

Activity and Rest:

- Avoid strenuous activities like lifting and running for the first few days following the procedure. Rest often.
- Do not bend or lift anything heavy as it can increase swelling and discomfort. Yoga and stretching involving your head dropping below your heart will also be uncomfortable.

Manage Discomfort:

- Take your medication as directed.
- Use cool compression on your face (30 minutes on/30 minutes off) for the first 24 hours to reduce swelling.
- NO SMOKING, SPITTING or USING A STRAW



WHAT'S NORMAL & WHEN TO CALL THE DOCTOR

What's Normal:

- swelling in your face
- bruising around mouth
- dry and cracked lips
- blood on your pillow from saliva
- jaw soreness
- headaches

Please Call Our Office If:

- you have throbbing with intense pain while on pain medication
- your gums or sutures look open
- a large chunk of grainy like substance falls out of your mouth
- your sutures come undone
- you see any exposed bone or foreign substance (could look like flap of skin)
- you develop a temperature of 100 degrees or higher



Call: 301-663-4012

email: hello@thewobblytooth.com

Visit: 176 Thomas Johnson Drive
Suite 200
Frederick, MD 21702

www.thewobblytooth.com



FOODS TO EAT

HEALING FROM THE INSIDE OUT

Always follow the instructions provided by Dr. Joe regarding post-operative care and dietary restrictions. We will give you personalized advice based on your specific situation and healing progress.

IMMEDIATELY AFTER SURGERY YOU CAN ENJOY

Liquid and Soft Foods: yogurt, applesauce, smoothies, mashed potatoes, broth-based soups, soft-cooked eggs, bananas, avocado, milk, pudding.

DO NOT use straws to prevent dislodging the blood clot.
DO NOT eat foods that are too hot, spicy or acidic.

AFTER POST OP & WITH DOCTOR'S DIRECTION YOU CAN ENJOY

Soft Grains and Carbohydrates: cooked pasta, soft bread or toast (avoid crusty bread), oatmeal

Soft Fruits and Vegetables: (choose non-acidic fruits and well-cooked vegetables) bananas, avocado, cooked vegetables (avoid raw vegetables initially)

Dairy or Alternative Milk products: milk, soft cheeses, pudding

DO NOT use straws to prevent dislodging the blood clot.
DO NOT eat foods that are too hot, spicy or acidic.



A FEW TIPS:

- **Temperature:** Avoid extreme temperatures as this can be uncomfortable.
- **Hydration:** Stay hydrated but avoid using straws to prevent dislodging the blood clot.

NO BITING INTO FOOD - cut and chew with back teeth



WHAT TO AVOID WHILE YOU HEAL

Hard Foods: (avoid chewing or biting that could potentially damage the surgical site) like nuts, chips, popcorn & hard candies

Acidic Foods: (acidic foods can irritate the surgical area and delay healing) like citrus fruits, tomatoes & vinegar-based foods

Spicy Foods: (spicy foods can cause discomfort & irritation) like hot peppers & spicy sauces

Alcohol and Smoking: alcohol and smoking interferes with healing and can increase the risk of complications.



MEMBERSHIPS

WE WILL STICK WITH YOU

Our implant membership program can offer several benefits for those getting dental implants.

Cost Savings: Our Arch Membership provides discounts on future services****. This can significantly reduce the out- of-pocket expenses compared to paying for each service separately.

Supportive Services: Additional services such as consultations, X-rays, and diagnostic tests are offered at a reduced rate through the membership program.

Preventive Care Emphasis: Regular preventive care appointments included in the membership can help detect any issues early, potentially reducing the need for costly treatments in the future.

Single Arch Membership - \$150 per month

- 2 Doctors Exams per year
- Nano Ceramic replacements or 50% off lab replacement fees**
- X-rays as needed*
- 1 emergency exam per year
- 15% off most services****

Dual Arch Membership - \$180 per month

- 2 Doctors Exams per year
- Nano Ceramic replacements or 50% off lab replacement fees**
- X-rays as needed*
- 1 emergency exam per year
- 15% off most services****



IS THE MEMBERSHIP WORTH IT?

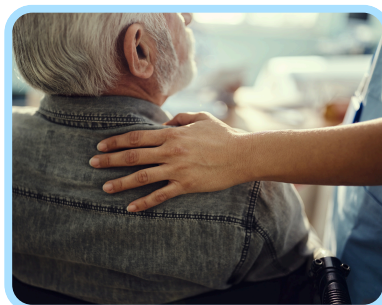
What if.....

- **my prosthesis chips?** without membership coverage you would pay between \$15,000 to \$20,000 to remake a single arch.
- **I see discoloration?** without membership coverage you would have to pay \$1000+ to have your teeth color corrected
- **I have facial trauma?** without membership coverage you would have to pay for exam and x-rays starting at \$800 as well as the repair costs to your arch(s).
- **I experience pain under my prosthesis?** without membership coverage you would have to pay \$500 to remove the arch, possibly x-rays at \$500+ as well as additional work that may need to be done.
- **my natural teeth start to chip?** you would have to pay for your emergency exam which starts at \$212+, xrays at \$500+ and any restoration costs at full price.

*As determined by the Wobbly Tooth

**Nano Ceramic replacements are included, as well as any parts needed to complete the procedure. Any part made by an outside lab will be discounted 50% off of the lab determined fee

****Exclusions - 15% off does not apply to services and products that have already been discounted or completed prior to membership activation



Call: 301-663-4012

email: hello@thewobblytooth.com

Visit: 176 Thomas Johnson Drive
Suite 200
Frederick, MD 21702

www.thewobblytooth.com



DR. JOE NGUYEN

A WHOLE TEAM BEHIND YOU

As a group of professionals, we are dedicated to helping others. Bringing expertise from all facets of life, both personal and professional. We are here to work with you.



Joe Nguyen, DDS, PhD
FOUNDER and DENTIST

“Patient health is my top priority... both in my practice and research”



ABOUT DR. JOE...

Dr. Joe graduated from the #1 dental school in the nation, University of Michigan School of Dentistry where he completed his Doctor of Dental Surgery (DDS) and PhD in Oral Health Sciences. He is an award-winning dentist and scientist that also studies oral cancer.

When he's not at the clinic, Dr. Joe manages a research team devoted to discovering and understanding the metabolic pathways of cancer cells in hopes that one day, his research will contribute to the cure for patients suffering from oral cancer.

As an alum he is an adjunct faculty at the University of Michigan. In addition, he mentors doctoral and dental school students who are interested in pursuing a career in health or science.

AWARD WINNING

- Fellow of The International Congress of Oral Implantologists
- Continuum Certificate from the Implant Educators Academy and University of Florida
- Hatton Award from the American Association for Dental, Oral, and Craniofacial Research
- Awarded National Research Grants exceeding \$1 million in total dispensation
- Dominic D. Dziewiatkowski Award in Research Excellence from The University of Michigan School of Dentistry

